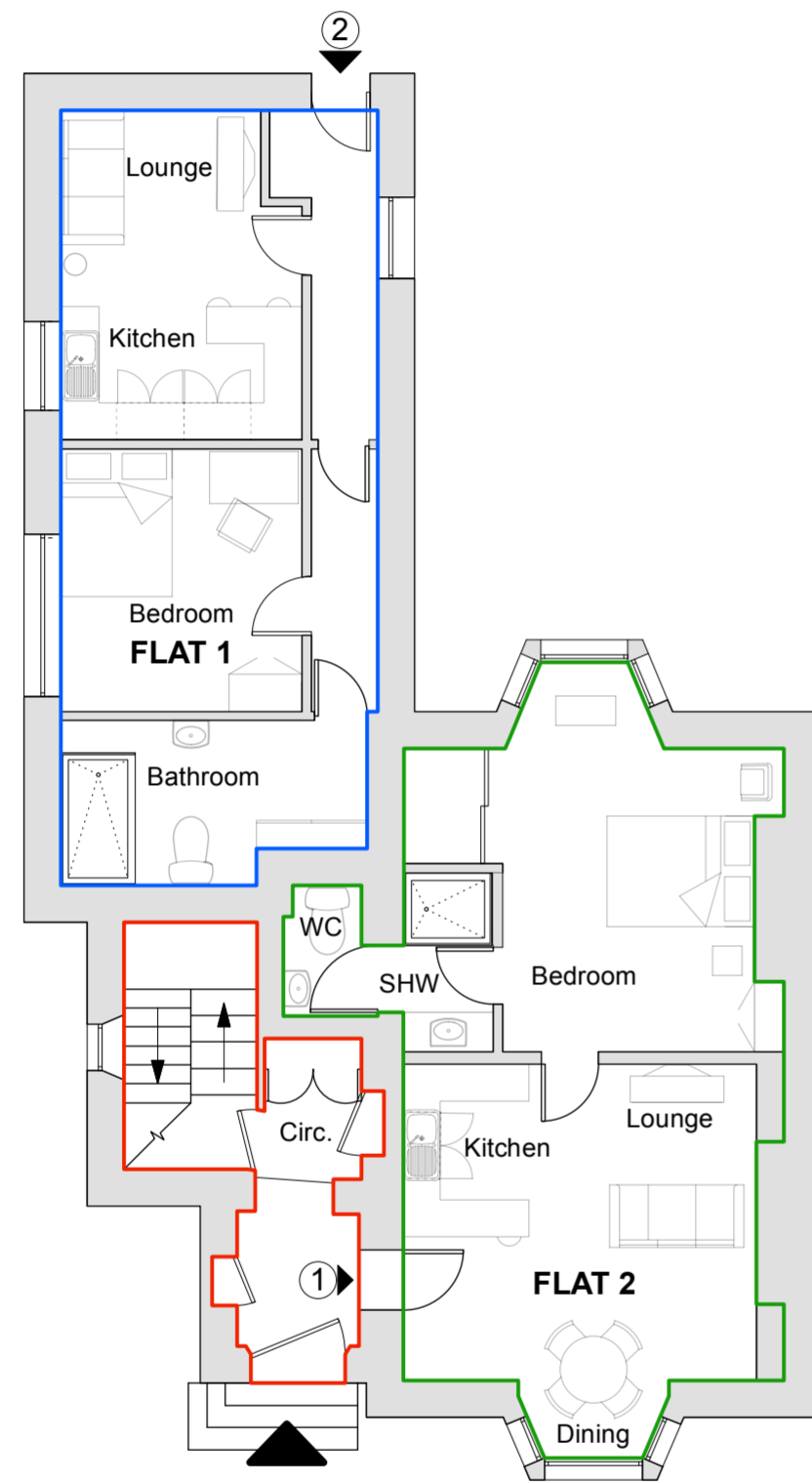
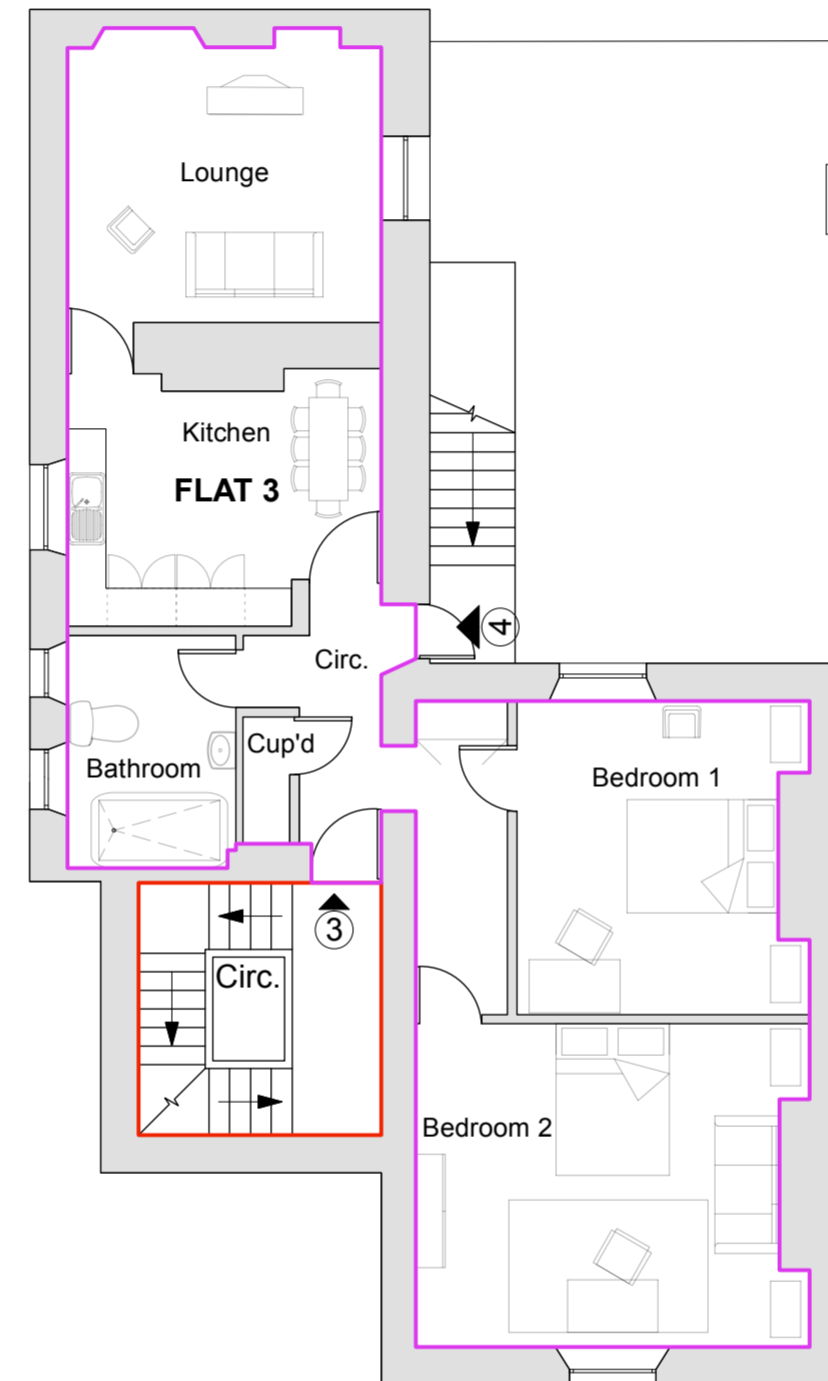


**NOTE:** Flat 1 (existing bus kiosk) to be surveyed at stage 3 and prior to planning

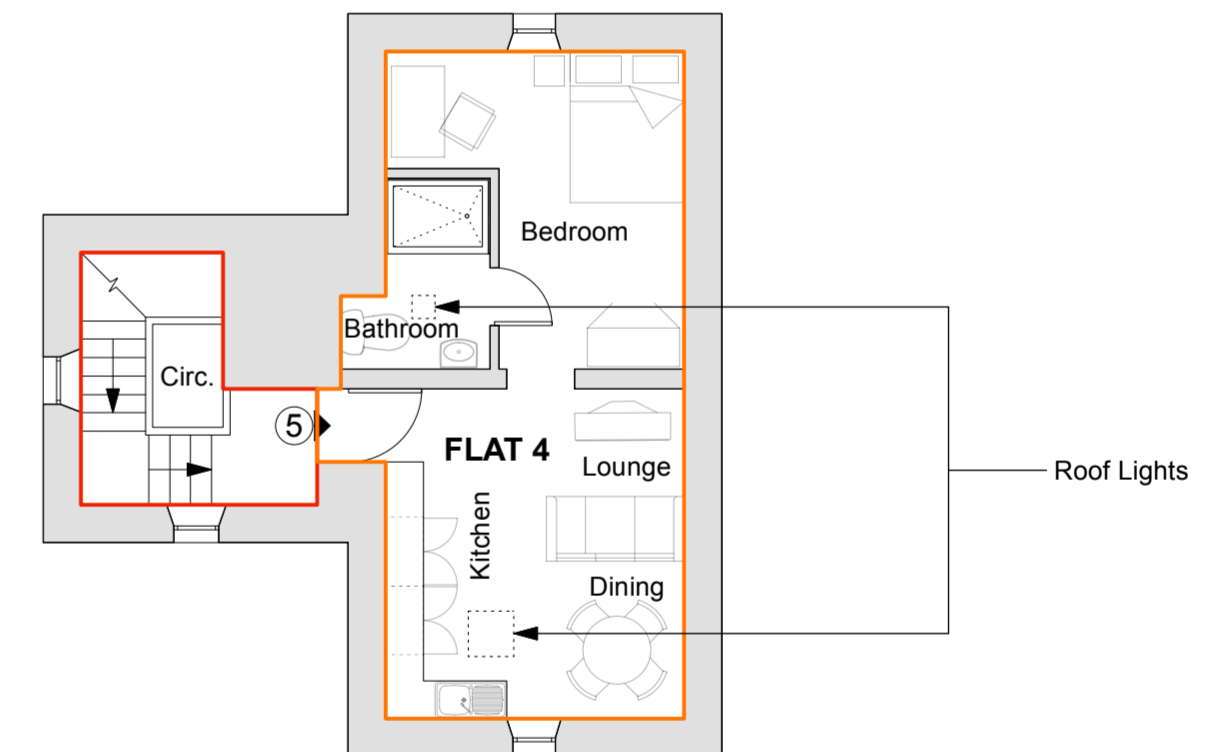
| Schedule of Accommodation |                                    |                                   |                     |                                   |                     |                     |                     |                    |
|---------------------------|------------------------------------|-----------------------------------|---------------------|-----------------------------------|---------------------|---------------------|---------------------|--------------------|
| FLAT                      | Gross internal floor area          | Kitchen                           | Dinning             | Lounge                            | Living Area         | Bedroom 1           | Bedroom 2           | Bathroom           |
| <b>Ground Floor</b>       |                                    |                                   |                     |                                   |                     |                     |                     |                    |
| 1                         | 43.95m <sup>2</sup>                | N/A                               | N/A                 | N/A                               | 18.76m <sup>2</sup> | 14.99m <sup>2</sup> | N/A                 | 8.51m <sup>2</sup> |
| 2                         | 48.52m <sup>2</sup>                | N/A                               | N/A                 | N/A                               | 23.09m <sup>2</sup> | 18.80m <sup>2</sup> | N/A                 | 5.27m <sup>2</sup> |
| <b>First Floor</b>        |                                    |                                   |                     |                                   |                     |                     |                     |                    |
| 3                         | 88.76m <sup>2</sup>                | 12.80m <sup>2</sup>               | 16.22m <sup>2</sup> | N/A                               | N/A                 | 15.12m <sup>2</sup> | 21.31m <sup>2</sup> | 6.80m <sup>2</sup> |
| <b>Second Floor</b>       |                                    |                                   |                     |                                   |                     |                     |                     |                    |
| 4                         | 36.37m <sup>2</sup>                | N/A                               | N/A                 | N/A                               | 17.66m <sup>2</sup> | 13.47m <sup>2</sup> | N/A                 | 5.46m <sup>2</sup> |
| <b>Circulation</b>        |                                    |                                   |                     |                                   |                     |                     |                     |                    |
|                           | Ground Floor - 13.20m <sup>2</sup> | First Floor - 10.70m <sup>2</sup> |                     | Second Floor - 8.10m <sup>2</sup> |                     |                     |                     |                    |



**Proposed Ground Floor**  
1:100



**Proposed First Floor**  
1:100



**Proposed Second Floor**  
1:100



Chartered Architects  
Chartered Building Surveyors  
Interior Designers  
CDM Services

Windward House, Fitzroy Road  
Exeter, Devon EX1 3LJ  
+44 (0)1392 266 890  
www.kendallkingscott.co.uk

Project  
**Conversion at  
20 Plymouth Road, Tavistock**  
Client  
**South Hams District Council**

Scale Paper Size Filename  
**1:100 A2**

Rev Date By Ap Note

Drawing Title  
**PROPOSED FLOOR PLANS  
OPTION 1**

Project Number Drawing Number - Revision

**220894 AL(0)02**

Date Drawn Checked Status  
**04/01/23 DG AW CONCEPT**

Check all dimensions and levels on site

Only to be used on the site for which designed. The electronic transmission of design information contained in this drawing is carried out entirely at the User's risk and Kendall Kingscott Ltd. will have no liability for any errors or inaccuracies arising therefrom. The production of amended or updated information from the said design information by the User is entirely the responsibility of the User and Kendall Kingscott Ltd. shall have no responsibility in respect thereof whatsoever.